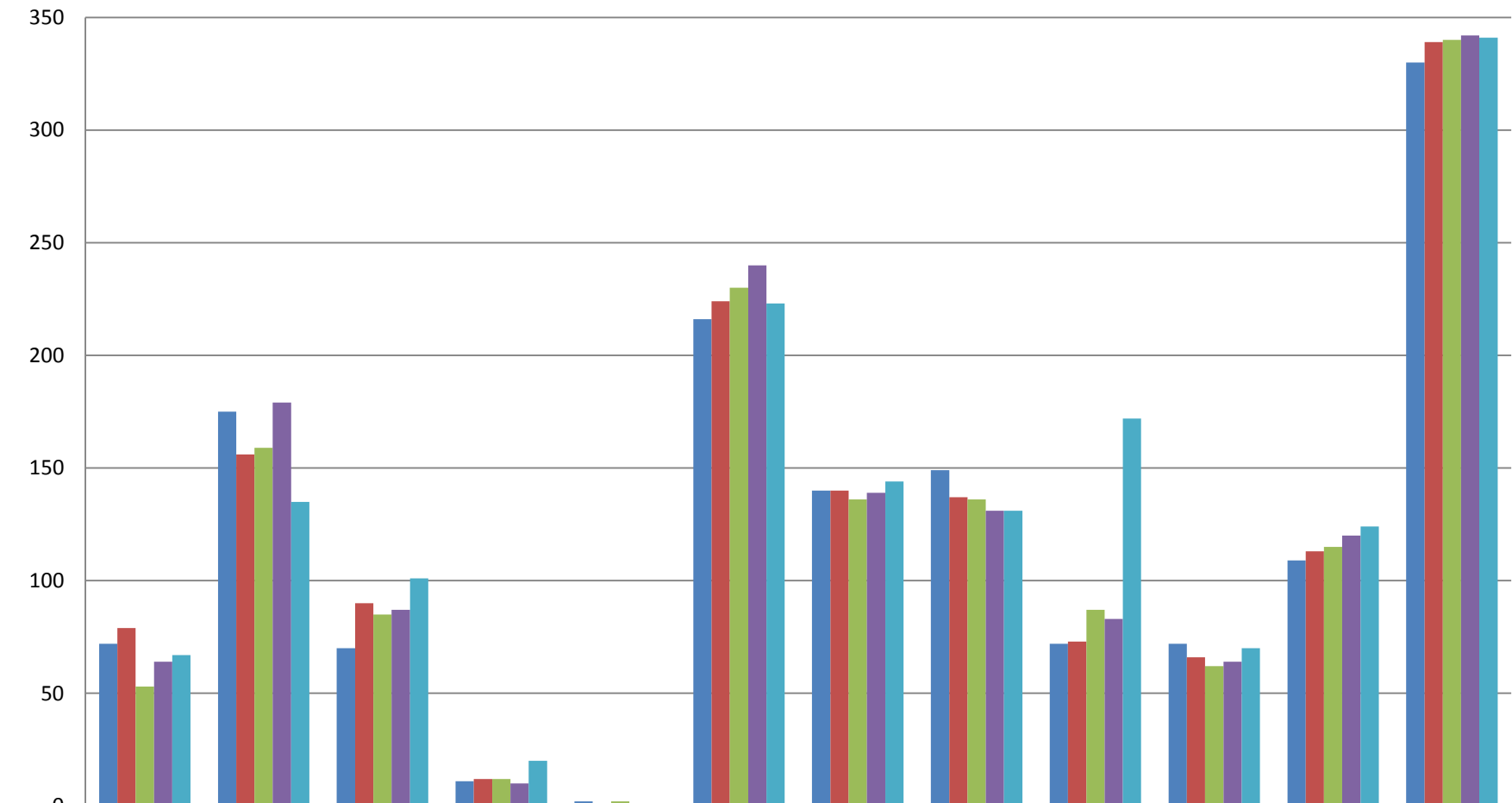


2013 Membership (August 24, 2013)



	Dues Only (\$20)	\$21 to \$50	\$51 to \$100	\$101 to \$200	\$201 plus	Fireworks	Flower Fund	Fish Fund	Safety Fund	Recreation Fund	Residents	Members
2009	72	175	70	11	2	216	140	149	72	72	109	330
2010	79	156	90	12	1	224	140	137	73	66	113	339
2011	53	159	85	12	2	230	136	136	87	62	115	340
2012	64	179	87	10	1	240	139	131	83	64	120	342
2013	67	135	101	20	1	223	144	131	172	70	124	341